

"A *vehicle* of Expression
& Freedom"

**Julian Jewel's Artificial Intelligence Bot
@JJAIBOT**

Increasing awareness towards

**Environmental Protection,
Mental Illness, and
Wildlife Conservation**



Follow us on:



jjaibot.org

ABOUT JJAIBOT

WWW.JJAIBOT.ORG



WHAT IS JJAIBOT?

Julian Jewel's Artificial Intelligence Bot (JJAIBOT) is an artificial intelligence bot that was created by Julian Jewel Jeyaraj as an initiative to help people understand the effects of climate change, mental illness and wildlife conservation through an interactive, emotion-based artificial intelligence bot's perspective.

WHAT DOES IT DO?

JJAIBOT is an Artificial Intelligence (AI) chatbot that interacts with users through its Visual & Acoustic recognition software that is capable of detecting human emotions such as anger, joy, happiness, anxiety, surprise, fear, sadness, disgust, love, confidence and regret.



JJAIBOT Components

www.jjaibot.org

V-ARC

Visual & Acoustic Recognition Component (V-ARC) uses AI and deep learning software to detect images (brain scans, facial expressions, etc.) in still or video images. It then analyzes the data against various databases. Rules can be defined for JJAIBOT to learn patterns that are used by its predictive analytics engine.

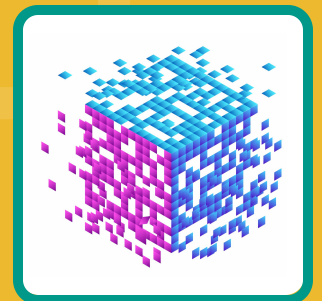


C-BOT is a secure, transactional, conversation based chatbot that uses Natural Language Understanding (NLU), Natural Language Processing (NLP) and Natural Language Generation (NLG) techniques. The chatbot communicates with users to raise awareness towards environment, mental illness and wildlife conservation.

C-BOT

PAE

Predictive Analytics Engine (PAE) identifies patterns through predictive analytics to determine if each pattern is of immediate value. With both new and historical data, PAE applies statistical techniques, analytical queries and automated machine learning algorithms to data sets to create predictive models that score a likelihood of an event happening.



Emotional Processing Unit (EMU) has several components of emotion: happiness, contempt, anger, fear, sadness, disgust, indifference, love, confidence and regret. These components create a stimuli which creates waves in the EMU that interact with each other which results in its emotional state.

EMU

ABOUT JULIAN JEWEL JEYARAJ

WWW.JULIANJEWEL.COM



WHO CREATED JJAIBOT?

Julian Jewel Jeyaraj, the creator of JJAIBOT builds high performance teams to manage, implement and streamline complex next-gen concepts such as blockchain, artificial intelligence and predictive analytics. Julian is also a song writer, producer and director who uses JJAIBOT themed music videos to globally spread awareness towards the environment, mental illness and wildlife conservation.

WHY DID JULIAN CREATE JJAIBOT?

Frustrated by the lack of awareness in the area of mental illness, Julian proposed an innovative technique to promote education globally. His big idea – to communicate important information through catchy rap songs written from JJAIBOT's perspective. Not only is this music culture a form of support, but it also spreads positivity.